



ADVANCED SUBSIDIARY GCE
GEOGRAPHY
Managing Change in Human Environments

F762/I

INSERT

Tuesday 24 May 2011
Afternoon

Duration: 1 hour 30 minutes



INFORMATION FOR CANDIDATES

- This document consists of **8** pages. Any blank pages are indicated.

INSTRUCTION TO EXAMS OFFICER/INVIGILATOR

- Do not send this insert for marking; it should be retained in the centre or destroyed.

Fig. 1 An urban area before and after a renewal project

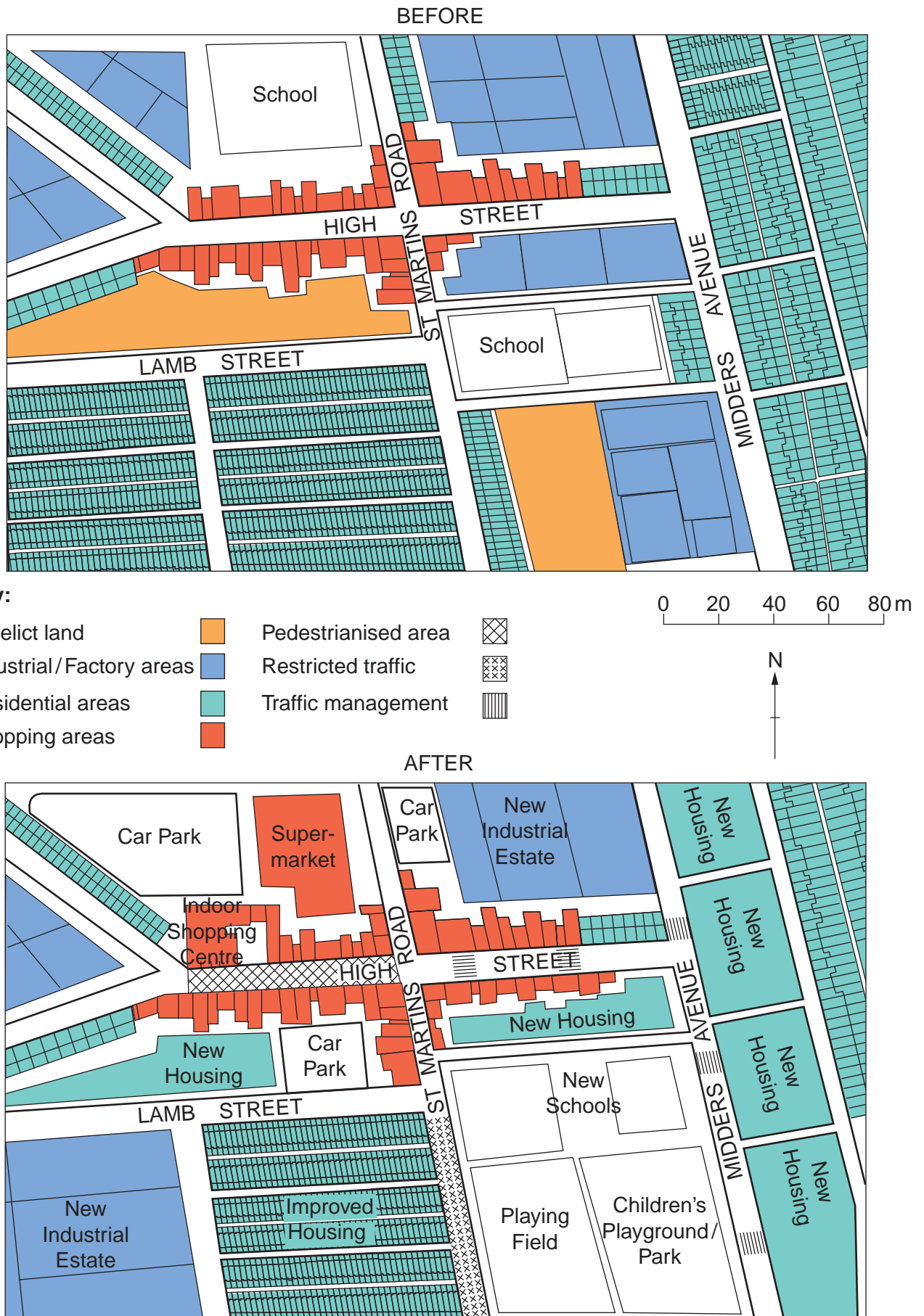


Fig. 2 Changes in a rural area between 1990 and 2010

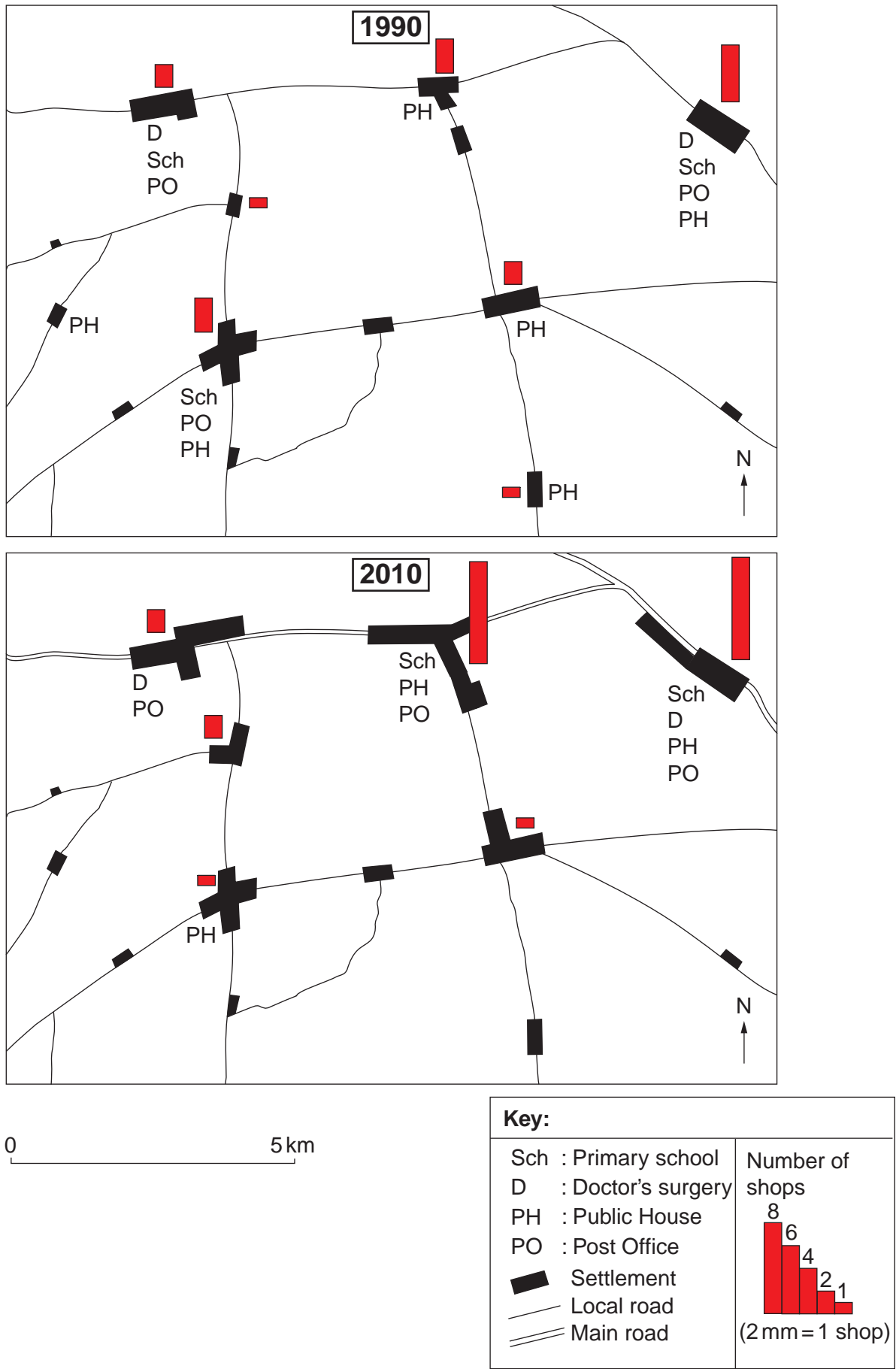


Fig. 3 Gross National Income (GNI) per person and energy consumption per person for selected countries, 2007

Country	GNI per person (\$)	Energy consumption per person (kg oil equivalent)
USA	46 970	8 640
UK	36 130	4 210
France	34 450	4 705
Saudi Arabia	22 960	5 240
Mexico	14 270	1 715
Brazil	10 700	1 265
Egypt	5 420	860
India	2 960	360
Mali	1 090	30

(Figures are approximate)

Fig. 4 Gross National Income (GNI) per person and tourist spending by people from selected countries, 2007

Country	GNI per person (\$)	Tourist spending per person (\$)
USA	46 970	224
UK	36 130	794
Australia	34 040	522
Spain	31 130	306
Portugal	22 080	230
Mexico	14 270	66
China	6 020	12
Egypt	5 420	18
India	2 960	5

(Figures are approximate)

BLANK PAGE

BLANK PAGE

**Copyright Information**

OCR is committed to seeking permission to reproduce all third-party content that it uses in its assessment materials. OCR has attempted to identify and contact all copyright holders whose work is used in this paper. To avoid the issue of disclosure of answer-related information to candidates, all copyright acknowledgements are reproduced in the OCR Copyright Acknowledgements Booklet. This is produced for each series of examinations and is freely available to download from our public website (www.ocr.org.uk) after the live examination series.

If OCR has unwittingly failed to correctly acknowledge or clear any third-party content in this assessment material, OCR will be happy to correct its mistake at the earliest possible opportunity.

For queries or further information please contact the Copyright Team, First Floor, 9 Hills Road, Cambridge CB2 1GE.

OCR is part of the Cambridge Assessment Group; Cambridge Assessment is the brand name of University of Cambridge Local Examinations Syndicate (UCLES), which is itself a department of the University of Cambridge.